

---

# Программное обеспечение Dell Wyse для VDI

Александр Тарасов

Консультант по решениям VDI

---



# Содержание

- Dell CCC Solutions
- Wyse Management Suite
- Wyse EasySetup
- Wyse Converter for PC



# Что такое Dell Cloud Client Computing?

## Dell Data Center Components

### Servers



### Storage



### Networking



## Dell Wyse Cloud Clients

### Zero Clients

P class



### Thin Clients



## "Best of Breed" Desktop Virtualization Software

Citrix

XenApp

VDI-in-a-Box

XenDesktop

Microsoft

Windows MultiPoint Server

Windows Server 2012

VMware



## Wyse Management Suite

# This is Dell Cloud Client Computing

Data Center Components

Servers

Storage

Networking

Dell Wyse Cloud Clients

Zero Clients

Thin Clients

Desktop Virtualization  
Software

Citrix

Microsoft

VMware



Dell Services

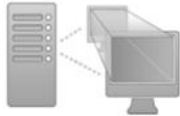
App Presentation

Desktop

Shared

OS Presentation

Desktop-as-a-Service



# Quick compare: Dell Wyse cloud client firmware offerings

## Dell Wyse ThinOS

- **Lowest TCO, highest performance firmware**
- HDX, RDP, & PCoIP protocols
- Low to no management overhead (self configuring and updating)
- Small footprint (~30MB), <10 second start-up
- No attack surface, virus and malware ***immune***
- Best “non-Windows” RDP client in industry (RDP 10.0 compatible, RemoteFX certified)
- Best “non-Windows” HDX client in industry (Comparable to Citrix Receiver 14.x, HDX certified)
- Best software PCoIP implementation in industry (Over double performance compared to WES)

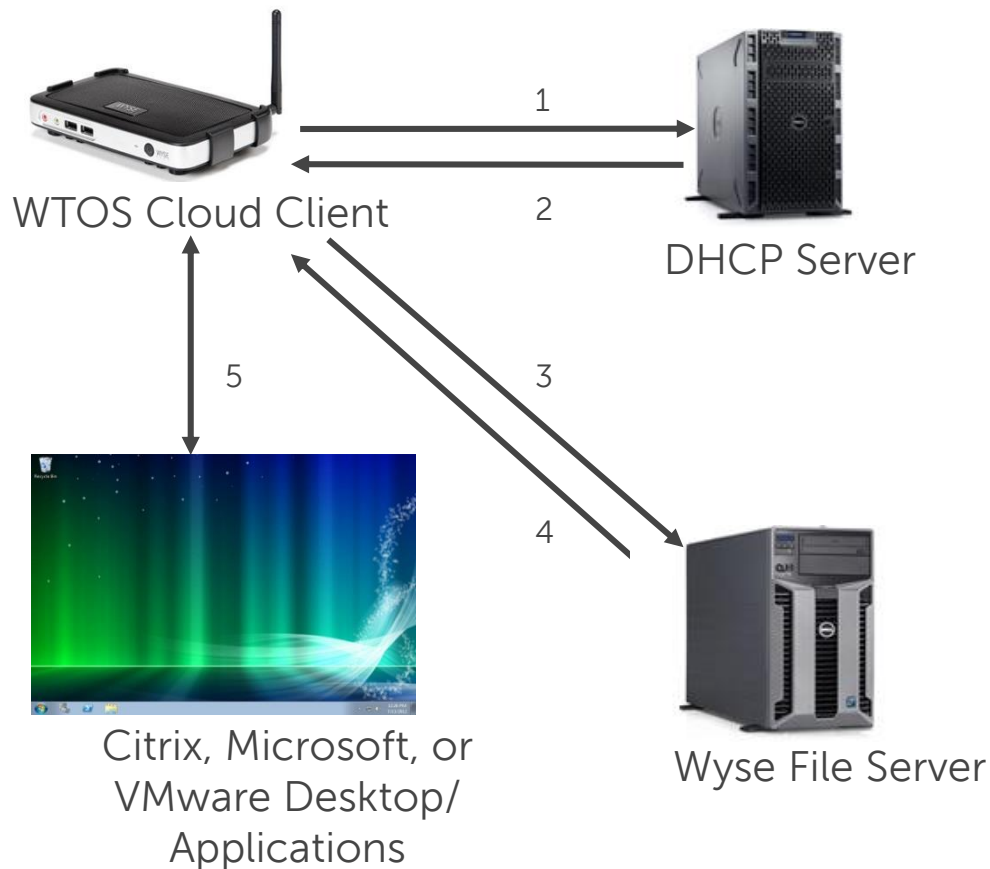


- **Flexible, secure Windows alternative**
- RDP / HDX clients, local browser & terminal emulation.
- No Linux skills required
- Third party Linux app support (VPN, Flash player, etc.)
- Low management overhead (self configuring and updating via Wyse Automatic Management™ (WAM))
- Reduced attack surface



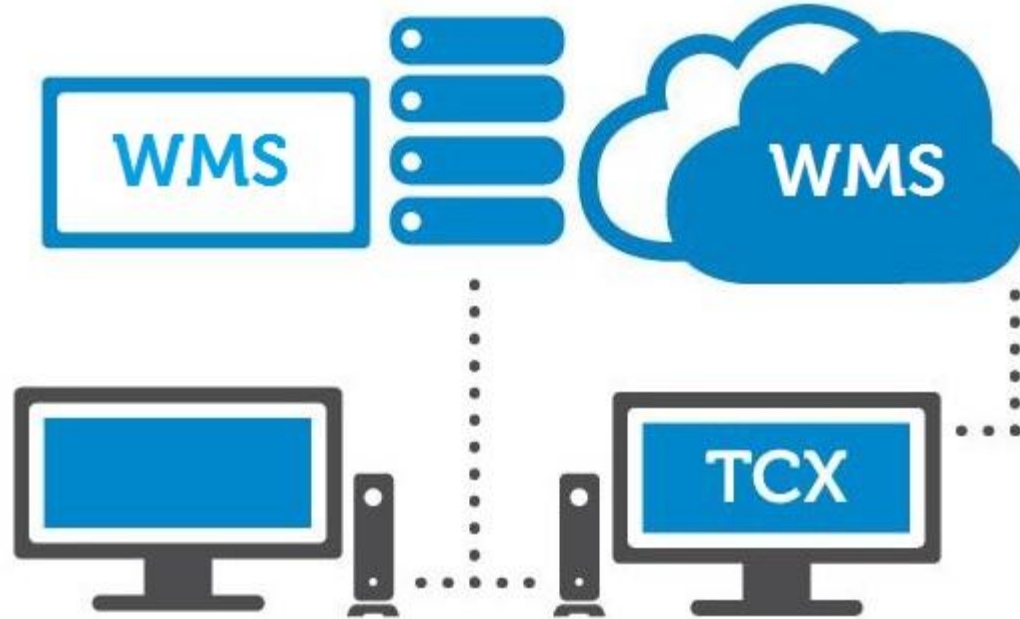
- **Most flexible thin client OS, based on Windows XP, Windows 7, or Windows 8**
- RDP / HDX / PCoIP clients, local IE browser & terminal emulation
- Runs approved Windows apps locally
- Largest local peripheral and driver support
- Supported by Wyse Configuration Manager™ (WCM) for automated, out of the box configuration

# "Hands Off" Automatic Management



1. WTOS Cloud Client Contacts DHCP Server on boot
2. DHCP Server Responds with IP Address, Subnet Mask, DNS info etc. and Wyse File Server Information
3. WTOS cloud client checks Wyse File server for wnos.ini, firmware, certificates, background, etc.
4. Wyse File server responds and WTOS cloud client is configured with proper settings
5. WTOS cloud client starts communication with Citrix, Microsoft, Quest vWorkspace or VMware Desktop, Applications, or connection broker

# Wyse Management Suite



# Wyse Management Suite Features

Features	WMS Standard	WMS Pro On-Premise	WMS Pro Cloud edition
Highly scalable solution to manage thin clients	Free Up to 10,000 endpoints	50,000 endpoints and more	1 million endpoints and more
Group based management	Yes	Yes	Yes
Multi Level Groups and Inheritance	Yes	Yes	Yes
Configuration Policy management	Yes	Yes	Yes
OS Patch and Image management	Yes	Yes	Yes
View effective configuration at device level after inheritance	Yes	Yes	Yes
Application policy management	Yes	Yes	Yes



# Wyse Management Suite Features

Features	WMS Standard	WMS Pro On-Premise	WMS Pro Cloud edition
Asset, Inventory & Systems management	Yes	Yes	Yes
Automatic Device discovery	Yes	Yes	Yes
Real-time commands	Yes	Yes	Yes
Smart Scheduling	Yes	Yes	Yes
Alerts, Events and Audit logs	Yes	Yes	Yes
Secure communication (HTTPS)	Yes	Yes	Yes
Manage devices behind firewalls	Limited	Limited	Yes
<b>Mobile App</b>	<b>No</b>	<b>Yes</b>	<b>Yes</b>



# Wyse Management Suite Features

Features	WMS Standard	WMS Pro On-Premise	WMS Pro Cloud edition
Alerts via Email and Mobile app	No	Yes	Yes
Scripting support for customizing application installation	No	Yes	Yes
Bundle Applications to simplify deployment and minimize reboots	No	Yes	Yes
Delegated Administration	No	Yes	Yes
Dynamic group creation and assignment based on device attributes	No	Yes	Yes
Two-factor authentication	No	Yes	Yes

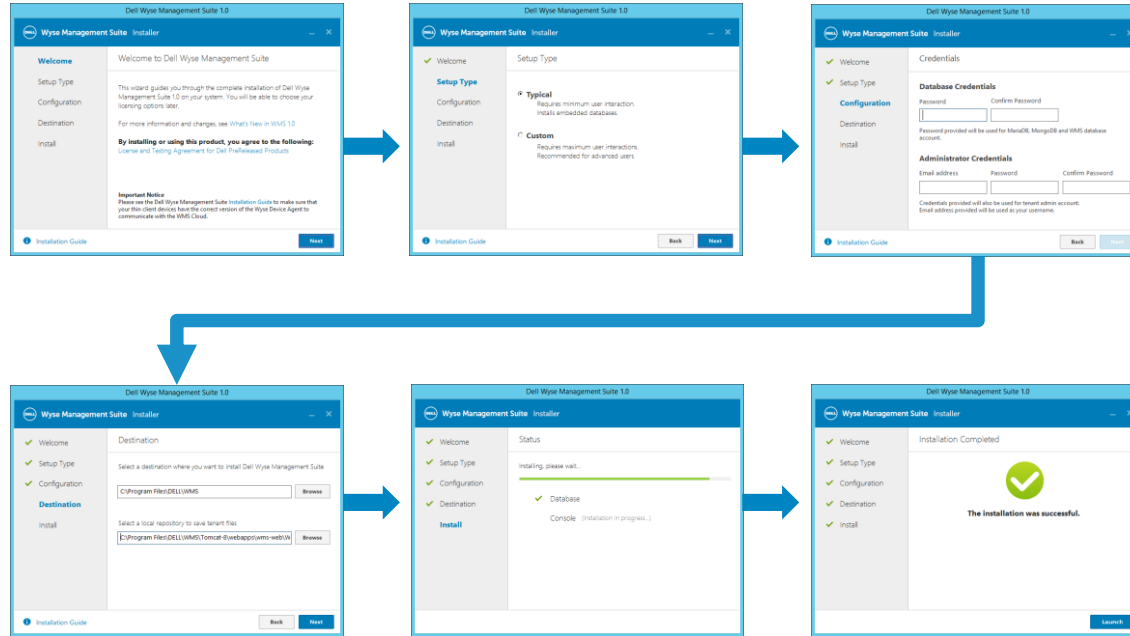


# Wyse Management Suite Features

Features	WMS Standard	WMS Pro On-Premise	WMS Pro Cloud edition
Active directory authentication for role based administration.	No	Yes	Yes
Multi-tenancy	No	Yes	Yes
Enterprise Grade Reporting	No	Yes	Yes
Multiple repositories	No	Yes	Yes
Enable/Disable HW ports on supported platforms	No	Yes	Yes
BIOS Configuration on supported platforms	No	Yes	Yes
Wyse Software Client Management	No	Yes	Yes



# Wyse Management Suite – Typical Install

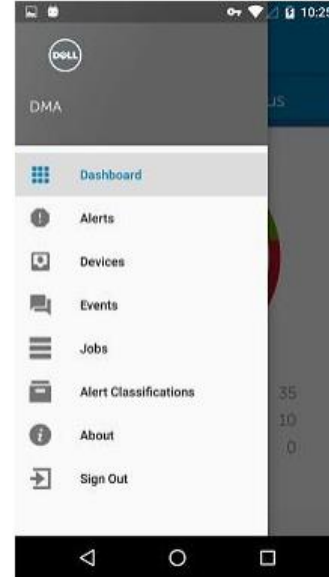
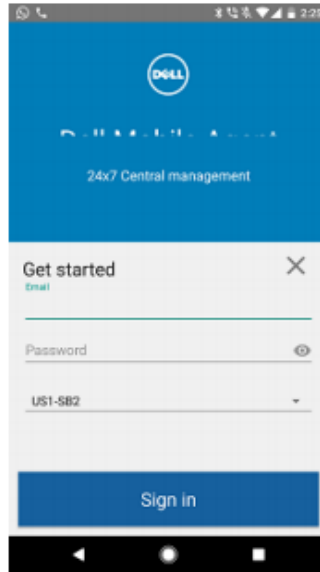


# Wyse Management Suite

Automatic Configuration of Wyse ThinOS (WTOS) clients



# Wyse Management Suite Mobile App: Android



# Wyse Management Suite Mobile App: Android



Dashboard - Alert



Dashboard - Status

# Wyse Management Suite - Private Cloud

## Hardware Requirements

The software can be installed on a physical or virtual machine.

- Supported Operating System
  - Windows server 2012 R2
  - Windows Server 2016
- Minimum Disk Space – 40 GB
- Minimum Memory (RAM) – 8 GB
- Minimum CPU Requirements – 4 CPU

For 50K devices:

- Supported Operating System
  - Windows server 2012 R2
  - Windows Server 2016
- Minimum Disk Space – **120 GB**
- Minimum Memory (RAM) – **16 GB**
- Minimum CPU requirements – 4 CPU



# Wyse Easy Setup

- Wyse Easy Setup is a free utility that will enable IT admins to quickly and easily configure their WES7P and WIE10 based Wyse Thin Clients. Wyse Easy Setup, in conjunction with Wyse Management Suite, will allow IT admins to configure one device and then quickly replicate that configuration to any other device with a compatible OS.
- IT admins can now easily tailor the end user experience based on their IT policy by creating either:
  - A Kiosk mode with only IT designated applications
  - A richer thin client experience with configurable access methods to local applications
- Software will be available as a web download at release time. It will be included in future maintenance releases of WES7 and WIE10 OS images



RDP\_Marish



VMware



Citrix



Notepad



Notepad++ : a  
free (GNU)...



Microsoft  
Office...



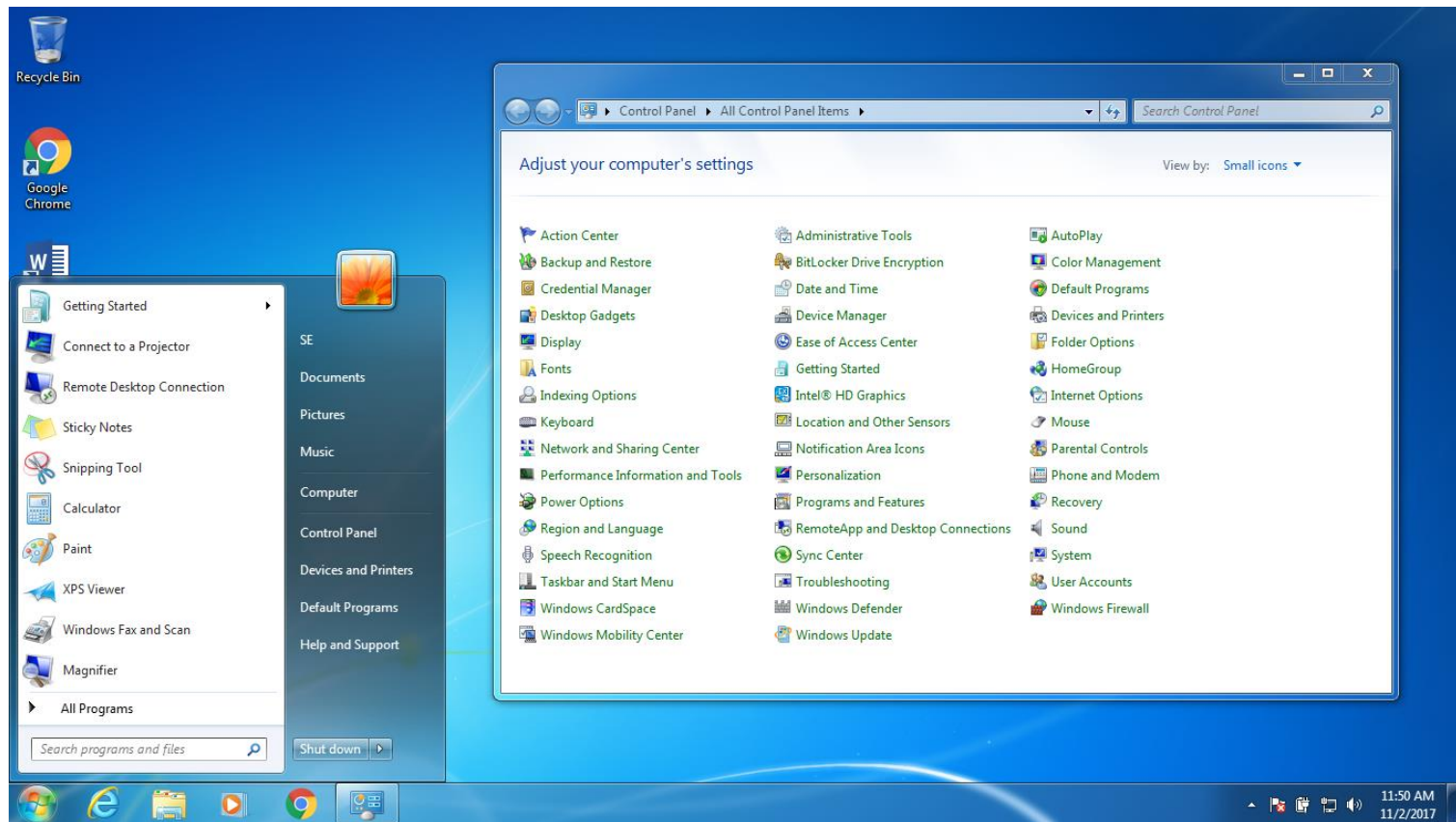
16 Jan 2018 02:21 PM

# Wyse Converter for PC

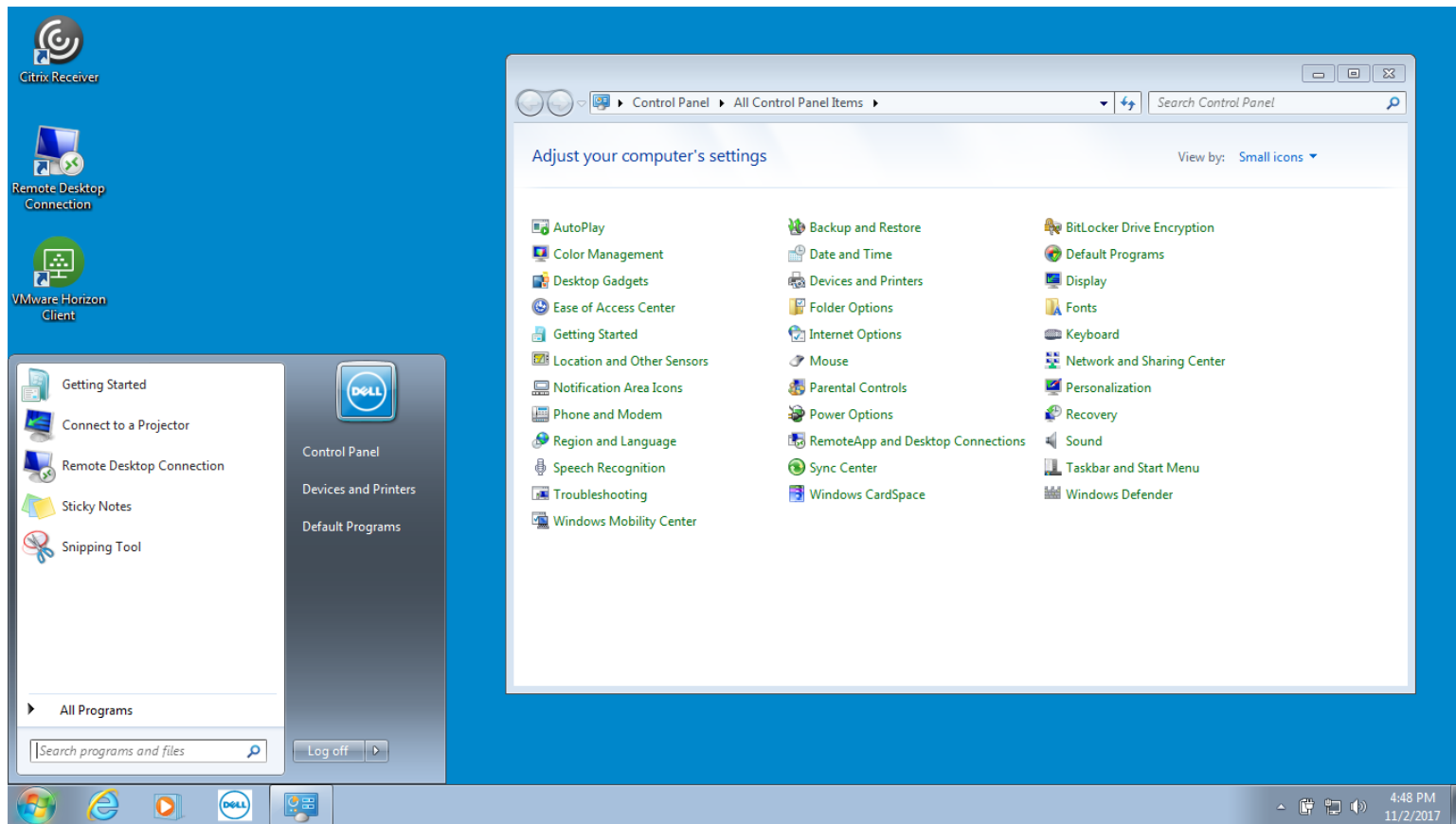
- Software defined thin client solution
- Uses existing Windows 7 or 10 OS and locks it down for a TC experience
  - Does not install a new OS
  - Creates a WyseAdmin and WyseUser account and locks down the WyseUser account
  - No custom drivers or rewrites needed for different platforms as standard Windows drivers are used
  - Does not uninstall previously installed software, like Office
  - VDI clients generally updated for Windows first
  - Can be uninstalled
- Uses existing OS license
  - Preserves the **VDA license costs paid in Windows 10 or any Windows under EA**
- Will leverage **UWF on Win10 devices. Write Filter support for WES7 is in October 2018**
- **Can be managed by WMS PRO**

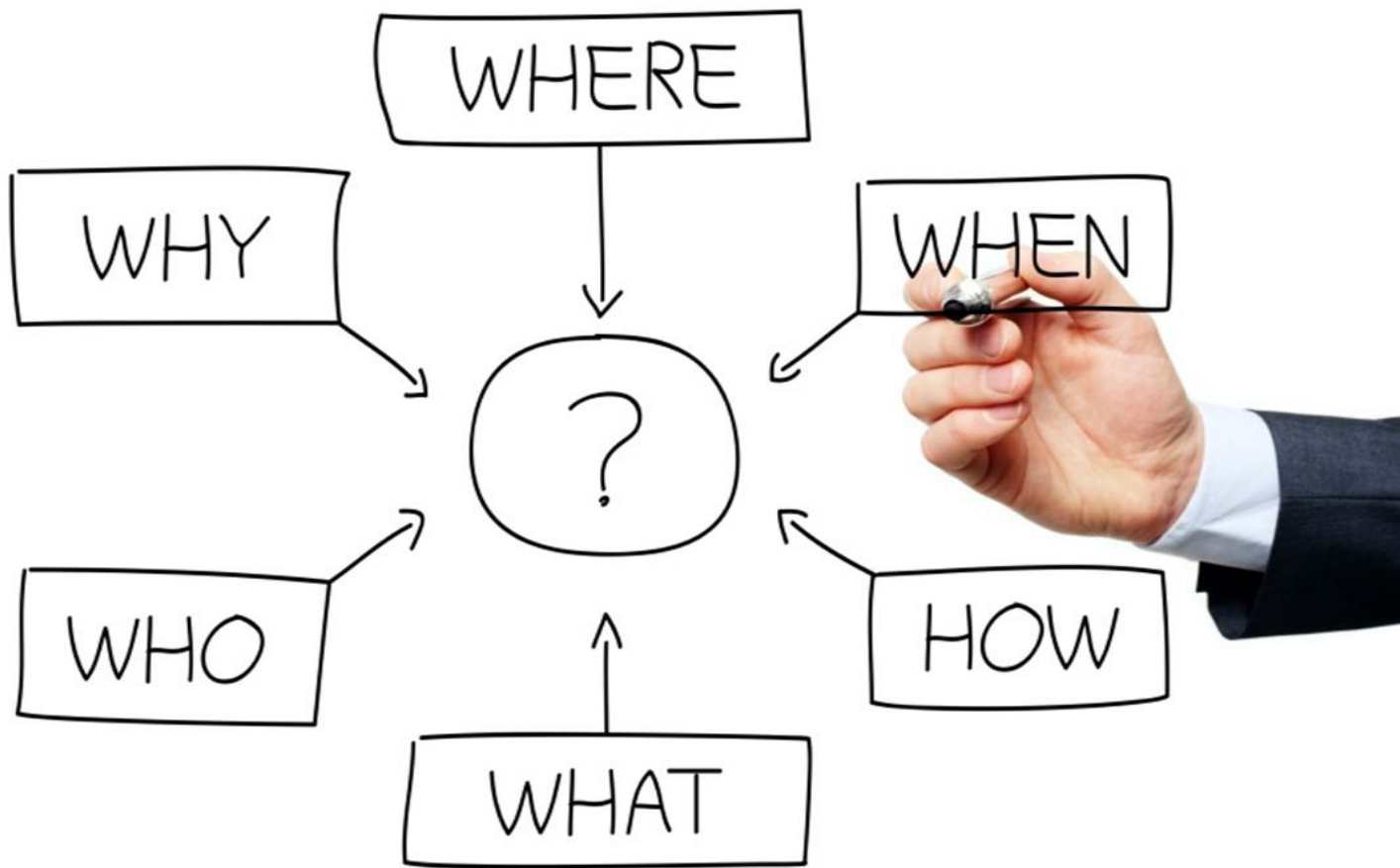


# OS Before Installation



# OS After Installation





# CCC Software Links

## Useful Links:

- Public Software Downloads
  - <http://downloads.dell.com/wyse/>
- Community Forums
  - [http://en.community.dell.com/techcenter/enterprise-client/wyse\\_general\\_forum/](http://en.community.dell.com/techcenter/enterprise-client/wyse_general_forum/)

